

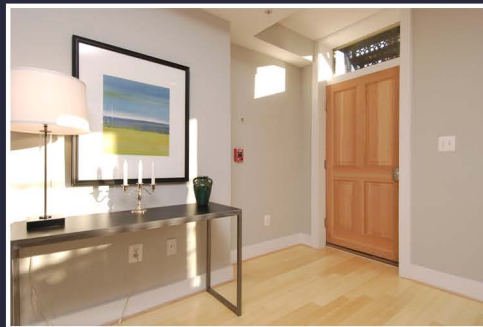


Presenting a
NEW CONSTRUCTION
Luxury Condo Home!

Desirable Location
Modern Convenience
Spectacular Detail

2 Bedroom, 2 Full Bath
Opulent Bathrooms
Modern Kitchen
Large Patio Space
Southwest Exposure

Discover your dream home nestled in one of DC's most vibrant neighborhoods, just steps to Dupont, Logan & U Street!



1821 15th Street Unit #1
NW Washington DC, 20009
www.capcityre.com

Kristen Zimmerman
Anthony Bozzi
Citylights Realty Group
Phone: 202.421.4120
Fax: 202.449.1134
Email: sales@capcityre.com



City Lights Realty Group
202.587.2787
1425 K St., NW #350
Washington, DC 20005



UNIT FEATURES & AMENITIES

AMENITIES

- 2 Bedrooms with Great Open Living Space
- Full of light with Southwest Exposure
- 9 Foot Ceilings
- Grand, Gourmet Kitchen, including:
 - Custom Espresso Stained Maple Cabinetry
 - Bosch Stainless Steel Appliances
 - Carrera Marble Counters
- Spa-Style Baths with Custom Carrera and Ming Green Marble Tile
- Eco-Friendly Bamboo Hardwoods
- All New Electrical & Plumbing, Which Means Energy Efficiency (Low Utility Cost to YOU & Low Impact on the Environment!!!)
- Energy Efficient Wood Windows
- Built In Sound System w/ I-Pod Docking Stations
- Private Rear Patio Space
- Steps to Metro, Shops and Dining!!
- Low Condo Fees

UNIT 1 - \$475,000 - Condo Fee: \$144/Monthly

UNIT 2 - SOLD

UNIT 3 - SOLD

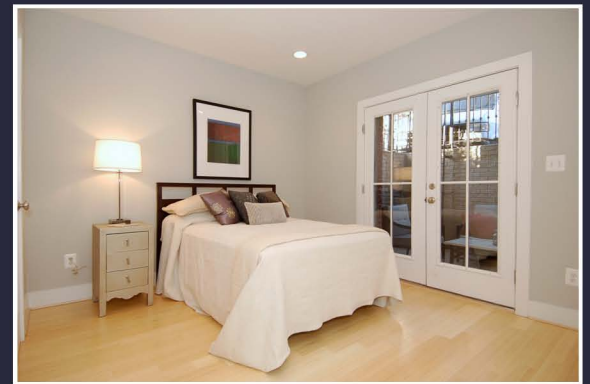
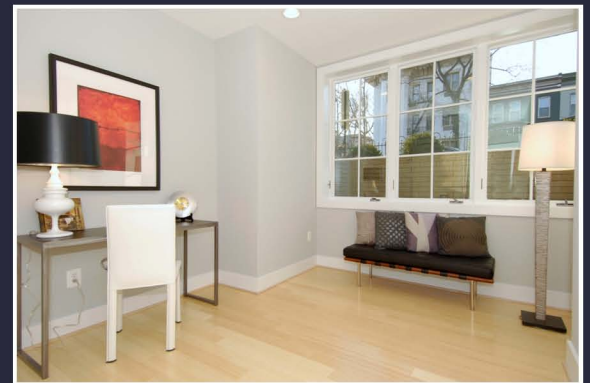
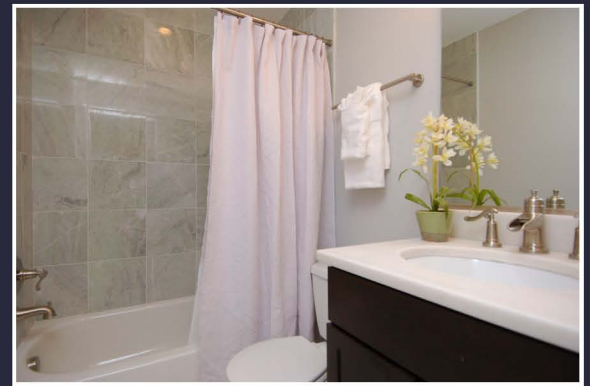
UNIT 4 - SOLD

NEIGHBORHOOD

Convenient city living with all that the Dupont, Logan and U Street areas have to offer at your doorstep! A few short blocks to the Metro, restaurants, shopping and vibrant nightlife!

Just Some of Dupont/Logan's Hottest Spots!

Logan Tavern
Dupont/U Street Metro
Whole Foods Market
Cork Wine Bar
Café St-Ex
Policy
Caribou Coffee
The Studio Theatre
Commissary
Room & Board
Homemade Pizza



Additional Information:

Development by Capital City Real Estate, LLC
Seller selects Counselors Title to conduct closings (special contract required)
Virtual Tour: <http://www.mouseonhouse.com/property/534/13138>

